



EMIS series

Automatic Screening Devices for non-metallic cargo



EMIS 110160 for palletized cargo

- Fully automatic detection of initiators and metal components of explosive devices
- Ideal for inspection of perishable goods, newspapers, organic products in general
- Low-intensity electromagnetic field: uses no ionizing radiation
- No dedicated operator needed
- Available in different sizes for inspection of single packages or entire pallets
- Complete data logging and traceability
- Completely solid-state construction: no periodic maintenance or calibration required

EMIS series

Automatic Screening Devices for non-metallic cargo


Fully Automatic Detection

The EMIS is designed to automatically detect detonators and metal components of explosive devices inside paper, newspaper, perishable goods such as produce, fish and meat (fresh or frozen) and organic material in general.

Electromagnetic inspection is the most suitable and quickest method for checking non-metallic cargo. The advanced technology employed in the EMIS minimizes the interaction with the goods themselves and does not depend on visual interpretation of an image by an operator.



EMIS 8075 
for package inspection

 **EMIS 6047 screening packages before shipping**

Overall Dimensions

1 TUNNEL USEFUL AREA:

- 23.6" X 18.5" (6047 model)
- 31.5" X 29.5" (8075 model)

2 PROGRAMMING PANEL

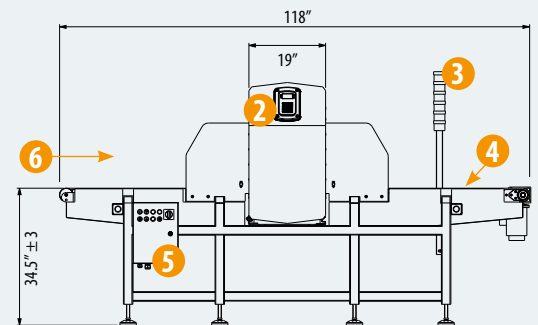
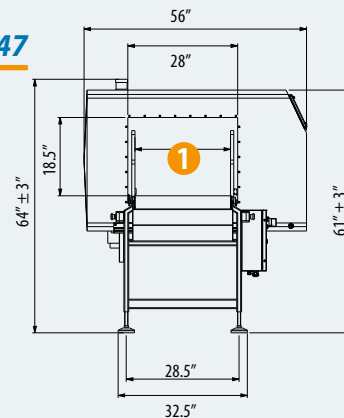
3 OPTICAL AND ACOUSTIC ALARM

4 CONVEYOR BELT

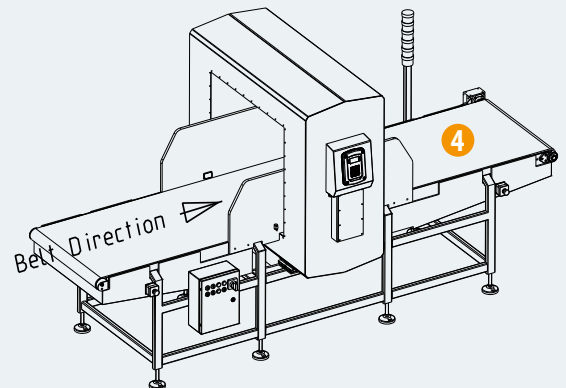
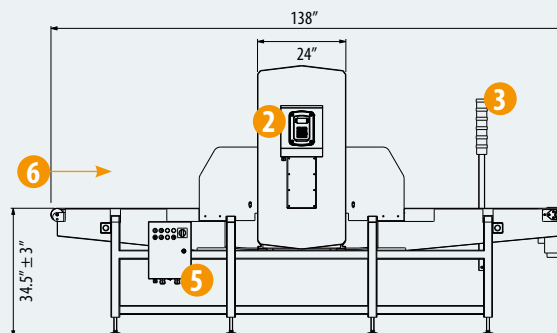
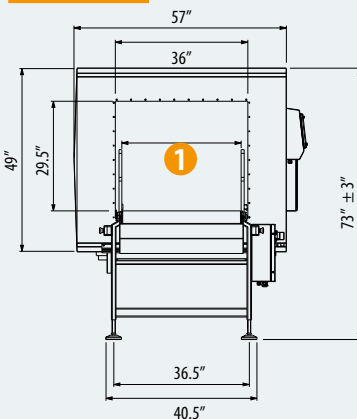
5 MOTOR CONTROL UNIT

6 ENTRANCE

EMIS® 6047



EMIS® 8075





EMIS models 110160 and 130160 are the first available automatic e. m. scanners for inspection of entire pallets of non-metallic cargo

The EMIS 6047 and 8075 are intended for inspection of packages while the models 110160 and 130160 can analyze palletized cargo.

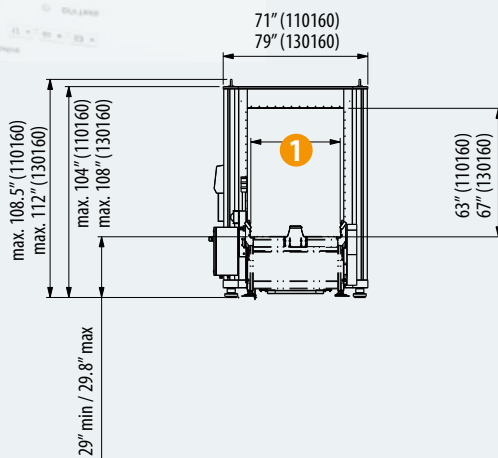
The EMIS 110160 and 130160 provide an automatic response based on pre-set threshold values being exceeded. The models can be used as a stand alone or in-line inspection device.



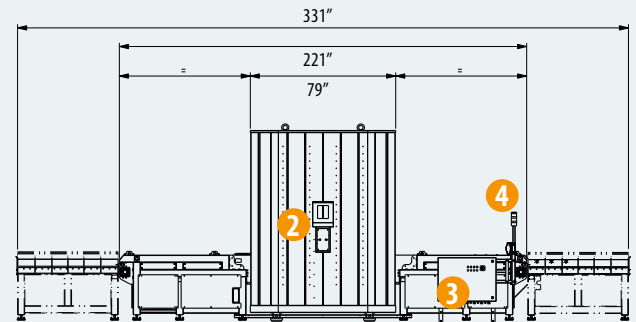
Complete data logging and traceability

EMIS® 110160 EMIS® 130160

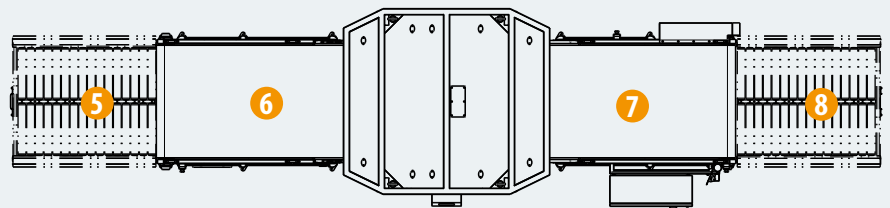
- 1 TUNNEL USEFUL AREA:
 - 43.3" x 63" (110160 model)
 - 51" x 67" (130160 model)
- 2 PROGRAMMING PANEL
- 3 POWER SUPPLY AND MOTOR CONTROL UNIT
- 4 OPTICAL AND ACOUSTIC ALARM
- 5 ENTRY ROLLER CONVEYOR
- 6 ENTRY CONVEYOR STRUCTURE
- 7 EXIT CONVEYOR STRUCTURE
- 8 EXIT ROLLER CONVEYOR



EMIS 130160 for palletized cargo



Belt Direction →



EMIS series

Automatic Screening Devices for non-metallic cargo

Specifications

DETECTION FUNCTIONS	Analysis of containers of perishable goods and paper without metal content	
	CEIA electromagnetic-profile analysis technology	
	0.5 ppm by weight Detection Sensitivity at maximum load (110160 and 130160 models)	
	Tunnel useful area	6047 model: 23.6" x 18.5" (600 mm x 470 mm) 8075 model: 31.5" x 29.5" (800 mm x 750 mm) 110160 model: 43.3" x 63" (1100 mm x 1600 mm) 130160 model: 51" x 67" (1300 mm x 1700 mm)
	Height of the conveyor belt	6047 - 8075 models: 34.5" ± 3" (875 mm ± 75 mm) adjustable 110160 - 130160 models: 29" min / 29.8" max (735 mm min / 755 mm max)
	Maximum transport weight	6047 - 8075 models: 300 ÷ 600 lbs (135 ÷ 275 kg) total (depending on the speed) 110160 - 130160 models: 3.307 lbs (1500 Kg)
	Maximum pallets height	110160 model: 61" (1550 mm) 130160 model: 65" (1650 mm)
	Speed range	20 to 50 m/min (6047 - 8075 models)
	Inspection time	Less than 1 min (110160 - 130160 models)
	Inspection capacity	Adjustable, up to 3,000 packs per hour (6047 - 8075 models) Up to 60 pallets per hour with automatic loading/unloading pallet system (110160 - 130160 models)
STRUCTURE	Material	AISI 316L Stainless Steel
	Protection degree	IP65
	Weight	6047 model: 1100 lbs (500 kg) • 8075 model: 1550 lbs (700 kg) 110160 model: 8818 lbs (4000 Kg) • 130160 model: 11000 lbs (5000 kg)
POWER SUPPLY	Supply voltage	200-240 V, 50-60 Hz
	Maximum current	11.4 A (6047 - 8075 models) 20 A (110160 - 130160 models)
PROGRAMMING AND COMMUNICATIONS	Modern, rugged and user friendly interface	
	Easy to read, high-contrast (3000:1) graphic display	
	Rugged, anti-vandalic stainless steel keyboard	
	Programming access protected by multiple password levels	
	Selection of the operative program	
	Programming type	Local, through the built-in keyboard
	Memory	125 programs, 100000 storable events
USB Storage device connection		
ALARM FUNCTIONS	Automatic slowing and stopping of the conveyor	
	Manual alarm reset and consequent restarting of the conveyor	
	Visible and audible alarms	
CONTROL INPUTS	Connection of:	following conveyor authorization, emergency button
	Serial interface RS232	Built-in
	Bluetooth connection	Built-in (deactivable)
	USB Interface	Built-in
	Ethernet interface	Built-in 10 - 100 Base-T
	Video Camera	Built-in IP camera (110160 - 130160 models)
	OUTPUTS	5 programmable relays (30Vca - 2.5A) for the activation of external devices
		Ready relay
		Ejector relay
		Preceding conveyor relay
		Item clear relay

Environmental Data

- **OPERATING TEMPERATURE:** 14°F to 122°F (-10°C to +50°C)
- **STORAGE TEMPERATURE:** -13°F to 158 °F (-25°C to +70°C)
- **RELATIVE HUMIDITY:** 0 to 95% (without condensation)

Conformity

- Conforms to the international standards currently applicable for electrical safety and EMC, and to the applicable EC Regulations
- Complies with Regulations relating to pacemakers, defibrillators or other vital support systems, pregnant women and magnetic storage media (floppy disks, audio cassettes, video cassettes and similar)

Applicable commodity groups

- Grains and animal feed, produce, perishables, bakery goods, dry goods
- Seafood and Meat
- Wearing apparel (without metallic accessories)
- Paper products, plastic, rubber
- Printed Material
- Flowers and herbs

for the following CCSF

- Shipping facilities
- Freight Forwarding Facilities
- Third Party Logistics Providers
- Manufacturing Facilities
- Warehouses
- Distribution Centers
- Growers of produce



CEIA USA Ltd - 9155 Dutton Drive, Twinsburg, OH 44087

Phone: (330) 405 3190 - Fax (330) 405 3196 - e-mail: security@ceia-usa.com

www.ceia-usa.com

Call Toll-Free 888-532-CEIA

DP210K0001V1000US-57016