



Power Cube® 900 HI-PE series

High Frequency Generators



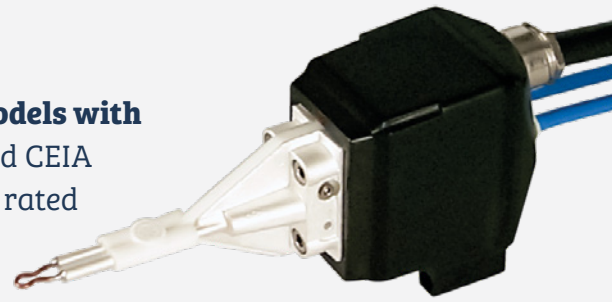
Features / Benefits

- **DUAL ALTERNATE, HIGH POWER OUTPUT**
- **HIGH LEVEL OF PERFORMANCE** with minimal operating costs
- **VERY COMPACT & INTEGRABLE GENERATORS**
- **MINIATURIZED HEATING HEADS**
- **HIGH SAFETY:** all models output isolated from the mains
- **BUILT-IN SELF-DIAGNOSIS**
- Supplied with **CALIBRATION CERTIFICATE**
- **MAINTAINS STABLE AND ACCURATE OUTPUT POWER** even as working conditions change
- **DIGITAL & ANALOG CONTROL** of the output power
- **INTERFACES** with **MASTER CONTROLLER V3+** unit to manage heating cycles (temperature, time and power)
- **COMPLIANT** with Electrical Safety and Electromagnetic Compatibility Regulations



www.ceia-usa.com

The 900 HI-PE series of High Frequency Generators spans five models with a power rating range of 2.8 to 6 kW. They combine the miniaturized CEIA Heating Head solution (patented) with a powerful, continuous-duty rated generator with so high efficiency that it can replace traditional generators in applications up to 12kW, thus cutting the initial investment and operating costs.



**Miniaturized heating head HH15
for Power Cube 32/45**

The high frequency generators are **manufactured using solid-state technology and each has an embedded microprocessor.** This guarantees stable power output as well as optimum operating frequency. The microprocessor also performs monitoring and diagnostic functions to inform the user of device status.

The generators have an ideal design for integration into automatic production systems. Space efficiency and simple operation also make these generators perfect for manual applications. All CEIA Power Cube Generators can be combined with the CEIA Master Controller V3+ unit.

They can even be interfaced with PCs or programmable controllers via their analog and RS-232 interfaces. Each HI-PE Generator is accompanied by a **calibration report that certifies the stability of the output voltage coming from the heating head.**

The use of innovative technology and latest-generation components places the **900 series generators in a class of their own in terms of performance, power output and operational cost.**

POWER CUBE		32/1800	32/900	45/900	64/900	90/900
INPUT / OUTPUT	Maximum absorbed power	2.8 kW	2.8 kW	3.5 kW	5.6 kW	6 kW
	Average output power at inductor	32 kVAR	32 kVAR	45 kVAR	64 kVAR	90 kVAR
	Available outputs	Two, alternate				
	Supply voltage	180... 260 Vac 1~ 50/60 Hz				400 Vac ±10% 3/PE~ 50/60 Hz
	Water cooling	Pressure: 300 kPa Flow: 1.5 - 2.0 l/min for each head connected			Pressure: 300 kPa Flow: 4.0 - 5.0 l/min for each head connected	
INTERFACE INPUT / OUTPUT	RS232 serial interface	Standard				
	Digital input activator	Two, one per each output power - Standard				
	Analogue power adjustment input	Option, on request				Standard
OPERATING CONDITIONS	Operating temperature	40°F to 130°F (+ 5 to + 55°C)				
	Storage temperature	-10°F to 160°F (- 25 to + 70 °C)				
	Relative humidity	0 ÷ 95 % (without condensation)				
FREQUENCY RANGE	1300 kHz... 1800 kHz	750 kHz... 1150 kHz				
DIMENSIONS (WxDxH)	Generator	10.8" x 10.4" x 5.5"			10.8" x 10.4" x 11.0"	17.5" x 11.3" x 5.2"
	Heating head HH10/HH11	2.5"x 4.8" x 3.7" (HH10)				
	Miniaturized heating head HH15	2.0" x 2.9" x 3"			Not applicable	
	Standard inductor holder	3.9"	5.9"		2.6"	
WEIGHT	Generator	22 lbs (10 kg)			44 lbs (20 kg)	
	Heating head	2.9 lbs (1,3 kg) (HH15) - 3.5 lbs (1,6 kg) (HH10)			4.8 lbs (2,2 kg) (HH11)	6.6 lbs (3 kg) (HH12)

CONFORMITY Complies with international standards currently applicable for Electrical Safety (EN 60204-1) and Electromagnetic Compatibility (EN 61000-6-2)

CEIA USA Ltd - 6336 Hudson Crossing Parkway, Hudson OH - 44236

P 330-405 3190 • **F** 330-405 3196 • **E** induction@ceia-usa.com



www.ceia-usa.com

CEIA USA reserves the right to make changes, at any moment and without notice, to the models (including programming), their accessories and options, to the prices and conditions of sale - DP040K0001v4000uUS (2021)